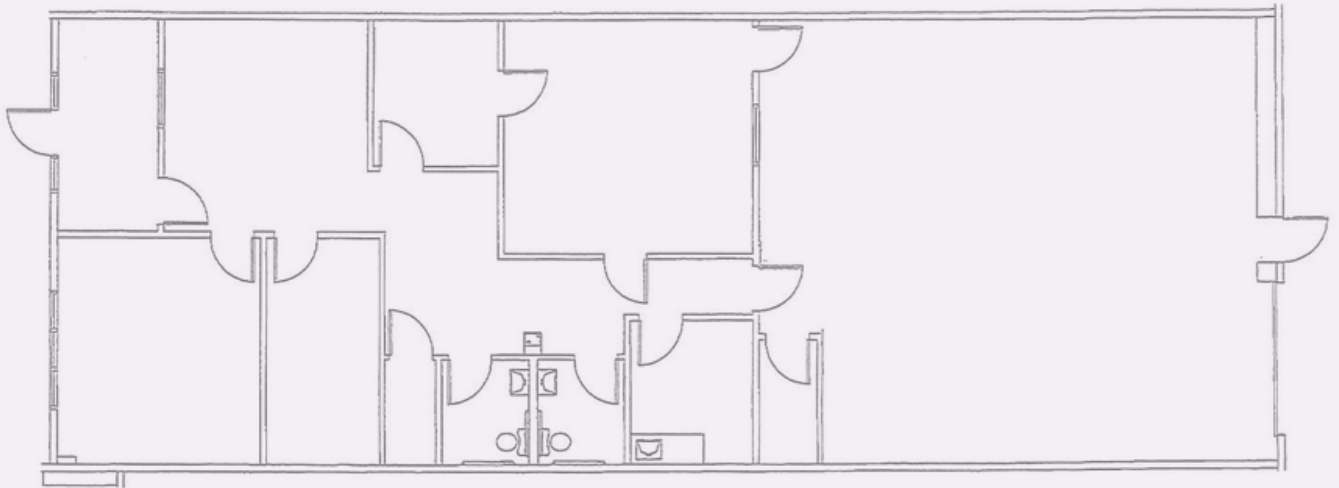
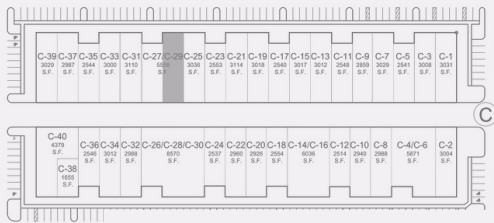




# MEROVAN

BUSINESS CENTER



## C-29

### PROPERTY FEATURES

- 2,568 SQUARE FEET
- OFFICE (1,518 SQ FT)
- WAREHOUSE (1,050 SQ FT)
- DRIVE-IN DOOR

LOCATED ON WOODRUFF RD IN GREENVILLE'S PREMIER BUSINESS CORRIDOR AT I-385 & I-85. THE CENTER IS SITUATED ON 60 ACRES AND INCLUDES 9 BUILDINGS TOTALING 640,000 SF. THE MEROVAN CENTER IS GREENVILLE'S LARGEST FLEX SPACE DEVELOPMENT.

### MEROVAN BUSINESS CENTER

1200 WOODRUFF ROAD  
GREENVILLE, SC. 29607

MARK VANVICK

864.297.6855

MVANVICK@REALTYLINKDEV.COM