



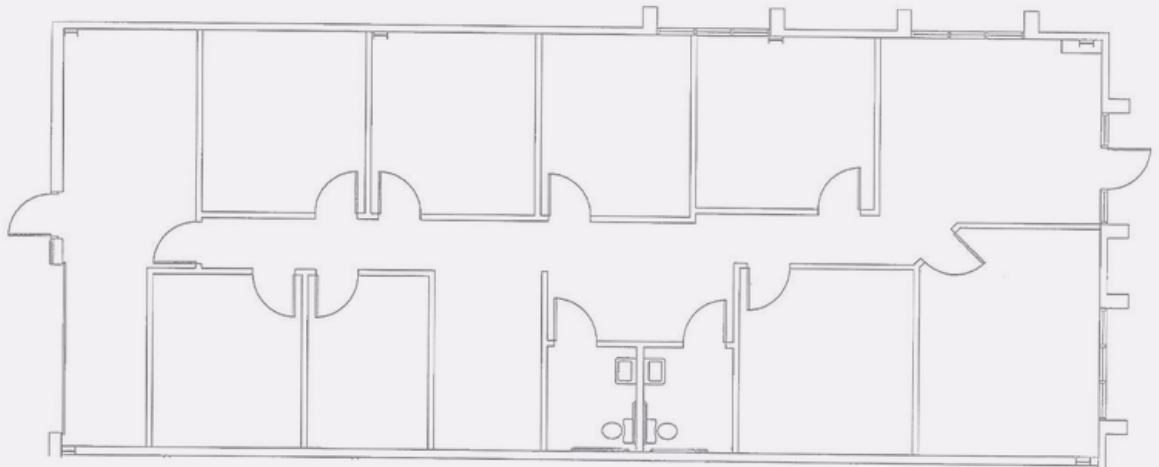
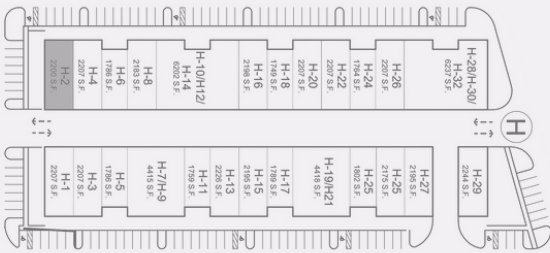
MEROVAN

BUSINESS CENTER

H-2

PROPERTY FEATURES

- 2,296 SQUARE FEET
- OFFICE (2,031 SQ FT)
- WAREHOUSE (265 SQ FT)
- DRIVE-IN DOOR



LOCATED ON WOODRUFF RD IN GREENVILLE'S PREMIER BUSINESS CORRIDOR AT I-385 & I-85. THE CENTER IS SITUATED ON 60 ACRES AND INCLUDES 9 BUILDINGS TOTALING 640,000 SF. THE MEROVAN CENTER IS GREENVILLE'S LARGEST FLEX SPACE DEVELOPMENT.

MEROVAN BUSINESS CENTER

1200 WOODRUFF ROAD
GREENVILLE, SC. 29607

MARK VANVICK

864.297.6855

MVANVICK@REALTYLINKDEV.COM